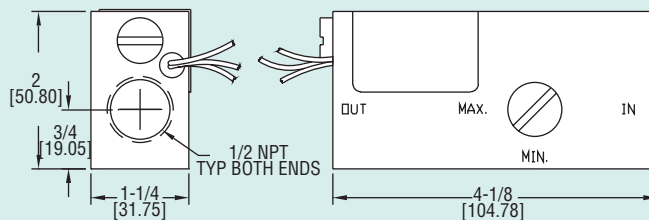




Series
AFS

Adjustable Flow Switch

For Oils, Water and Gases, Infinite Adjustments



Flow

The **Series AFS Adjustable Flow Switch** is externally adjustable and is ideal for protecting machine tools from coolant flow failure, protecting bearings from loss of lubricant or assuring proper air flow. The Series AFS offers an infinite number of flow settings from 0.5 to 20 GPM at pressures up to 1000 psig, with low pressure drop and precise repeatability. The AFS is housed in either brass or stainless steel and can be used with water, compatible liquids, oils, and gases.

STOCKED MODELS in bold

Model	Media	Electrical Connection	Piston	Housing
AFS-131	Oil	Wire leads	Brass	Brass
AFS-141	Water	Wire leads	Polysulfone	Brass
AFS-151	Liquids	Wire leads	316SS	316SS
AFS-231	Gases	Wire leads	Brass	Brass
AFS-251	Gases	Wire leads	316SS	316SS
AFS-132	Oil	1/2" NPT Conduit	Brass	Brass
AFS-142	Water	1/2" NPT Conduit	Polysulfone	Brass
AFS-152	Liquids	1/2" NPT Conduit	316SS	316SS
AFS-232	Gases	1/2" NPT Conduit	Brass	Brass
AFS-252	Gases	1/2" NPT Conduit	316SS	316SS

SPECIFICATIONS

Service: Compatible gases or liquids.

Wetted Materials: See model chart for housing and piston, Spring: 316SS, O-ring: Viton®, Other: Epoxy.

Temperature Limits: -20 to 300°F (-29 to 149°C), -20 to 225°F (-29 to 107.2°C) with polysulfone piston.

Pressure Limit: 1000 psi (68 bar).

Accuracy: ±10% of setpoint.

Repeatability: ±1% maximum deviation.

Switch Type: SPDT.

Electrical Rating: 20 VA.

Electrical Connections: 18 AWG, 24" (61 cm), polymeric lead wires, optional 1/2" male NPT conduit connection.

Process Connection: 1/2" female NPT ports.

Mounting Orientation: Any.

Setpoint Adjustment: Liquids: 0.5 to 20 GPM (1.9 to 75.7 LPM), Gases: 1.0 to 75 SCFM (28 to 2124 LPM) at 5 psig.

Required Filtration: 50 microns or better.

Weight: 2 lb, 11 oz (1.22 kg).

Agency Approvals: UL, CSA, CE.



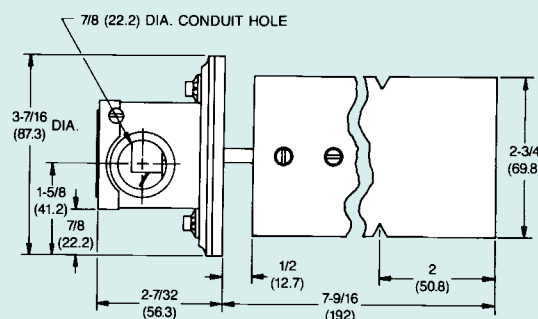
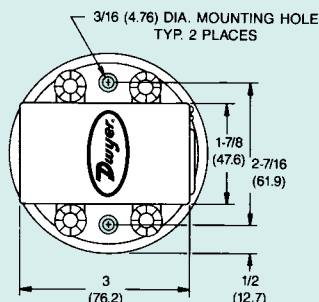
Model
530

Air Flow Switch

Adjustable from 400-1600 FPM, Stainless Steel Vane



Patent No. 4,725,700



The **Model 530 air flow switch** provides excellent sensitivity and reliability at a very reasonable price. Quality features include a rugged die cast body, stainless steel vane and SPDT snap switch. Unit is field adjustable from 400-1600 FPM. Mounting is fast and simple, with only two screws needed. Vane fits 6 in. or larger ducts.

STOCKED MODEL

530 Air Flow Switch

Range 400-1600 FPM mounted on top of horizontal duct.

CAUTION: FOR USE ONLY WITH AIR OR NON-COMBUSTIBLE NON-CORROSIVE GASES. UNIT IS NOT SEALED AGAINST DUST.

SPECIFICATIONS

Service: Air and non-combustible gas flow.

Wetted Materials: Contact factory.

Vane: Stainless Steel.

Temperature Limit: 180°F (82°C).

Switch Type: SPDT.

Electrical Rating: 125 VAC - 9.8 amp full load 58.8 amp locked rotor. 250 VAC - 4.9 amp full load 29.4 amp locked rotor. Pilot Rating: 470 VA at 125, 250 VAC. Resistive: 15 amp at 125, 250, or 480 VAC.

Electrical Connections: Screw type terminal.

Conduit Connection: 7/8" conduit hole.

Mounting Orientation: Horizontal duct flow

Set Point Adjustment: Screw type.

Weight: 1 lb, 1 oz (481.94 g)

Agency Approvals: UL, CSA.